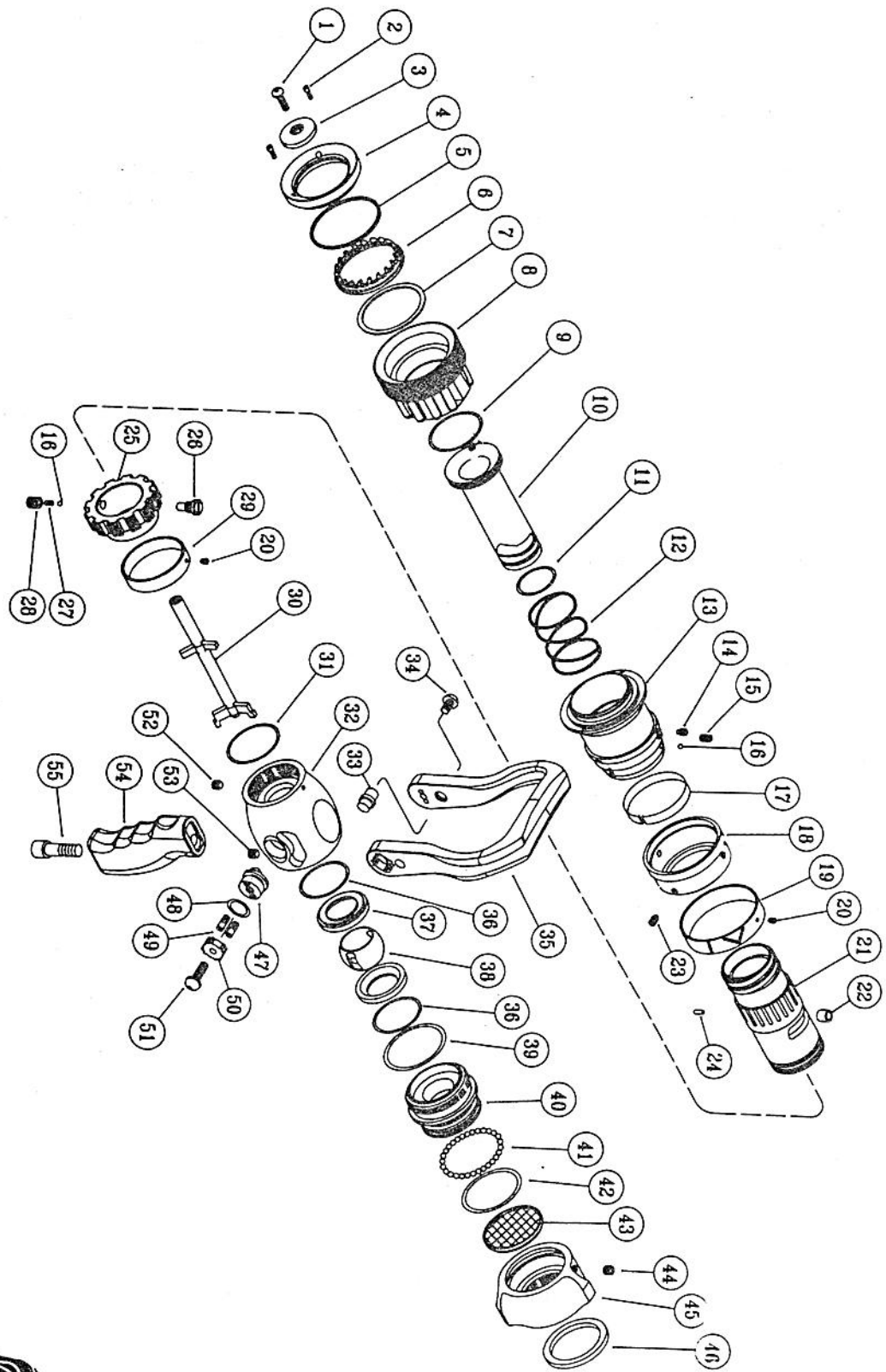


2009 Deleliste



SERVICE PART LIST
STYLE # 366A NOZZLE

SERVICE PART LIST FOR NEW # 366A NOZZLE

ITEM NO.	DESCRIPTION	PARTS NO.	QUANTITY
1	SCREW(# 10-24X1/2)	S0025	1
*2	SCREW(# 4-40X3/8)	S0065	3
3	BAFFLE	A0010	1
4	RETAINER	A0007	1
5	TEETH BEARING	F0010	1
*6	SPINNING TEETH	D0009	1
7	TEETH BEARING	F0011	1
8	BUMPER	D0021	1
*9	O-RING(S-40)	00210	1
10	DISCHARGE TUBE	A0040	1
*11	O-RING(27.5X2)	00120	1
12	SPRING	F0097	1
13	PATTERN SLEEVE	A0030	1
14	SCREW(# 10-32UNF)	S0064	3
15	SCREW(# 10-32UNF)	S0130	2
16	BALL BEARING(3.5)	F0069	3
17	ROUND SPRING	F0021	1
18	WEAR RING	A0029	1
19	PATTERN LABEL	A0038	1
20	SCREW(M3*0.5)	S0016	2
21	NOZZLE BODY	A0050	1
22	ROLLER	F0750	1
23	SCREW(# 10-32)	S0090	1
24	PIN(3MM*7, 5L)	F0290	1
25	INDEX RING	A0059	1
26	SCREW(5/16"-24UNF)	S0250	1
27	DETENT SPRING	F0159	1
28	SET SCREW	S0074	1
29	FLOW BAND	A0034	1
30	STEM	F0080	1
*31	O-RING(S-38)	00205	1
32	VALVE BODY	A0071	1
33	DRIVE SHAFT	F0263	2
34	SCREW(1/4-28)	S0030	2
35	HANDLE	A0006	1
*36	O-RING(S-36)	00200	2
*37	SEAT	F0311	2
38	BALL	F0110	1
*39	O-RING(G-45)	00325	2
40	ADAPTER	A0917	1
41	BALL BEARING(3/16")	F0076	31
*42	O-RING(G-42)	00320	1
43	SCREEN	F0138	1
*44	SCREW(1/4-28UNF)	S0112	1
45	SWIVEL(NH)	A0294	1
*46	GASKET(50*40*4)	D0070	1
*47	TRUNNION(LEFT)	F0100	1
	TRUNNION(RIGHT)	F0102	1
*48	O-RING(P-14)	00080	2
*49	SCREW(# 10-32UNF)	S0131	4
50	RING	A0851	2
*51	SCREW(1/4-28UNF)	S0039	2
*52	SCREW(1/4-20UNC)	S0116	1
53	SCREW(1/4"-20UNC)	S0114	1
54	PISTOL GRIP	A0115	1
55	SCREW	S0029	1

"*" indicates that the parts included in Service Kit No.1001.