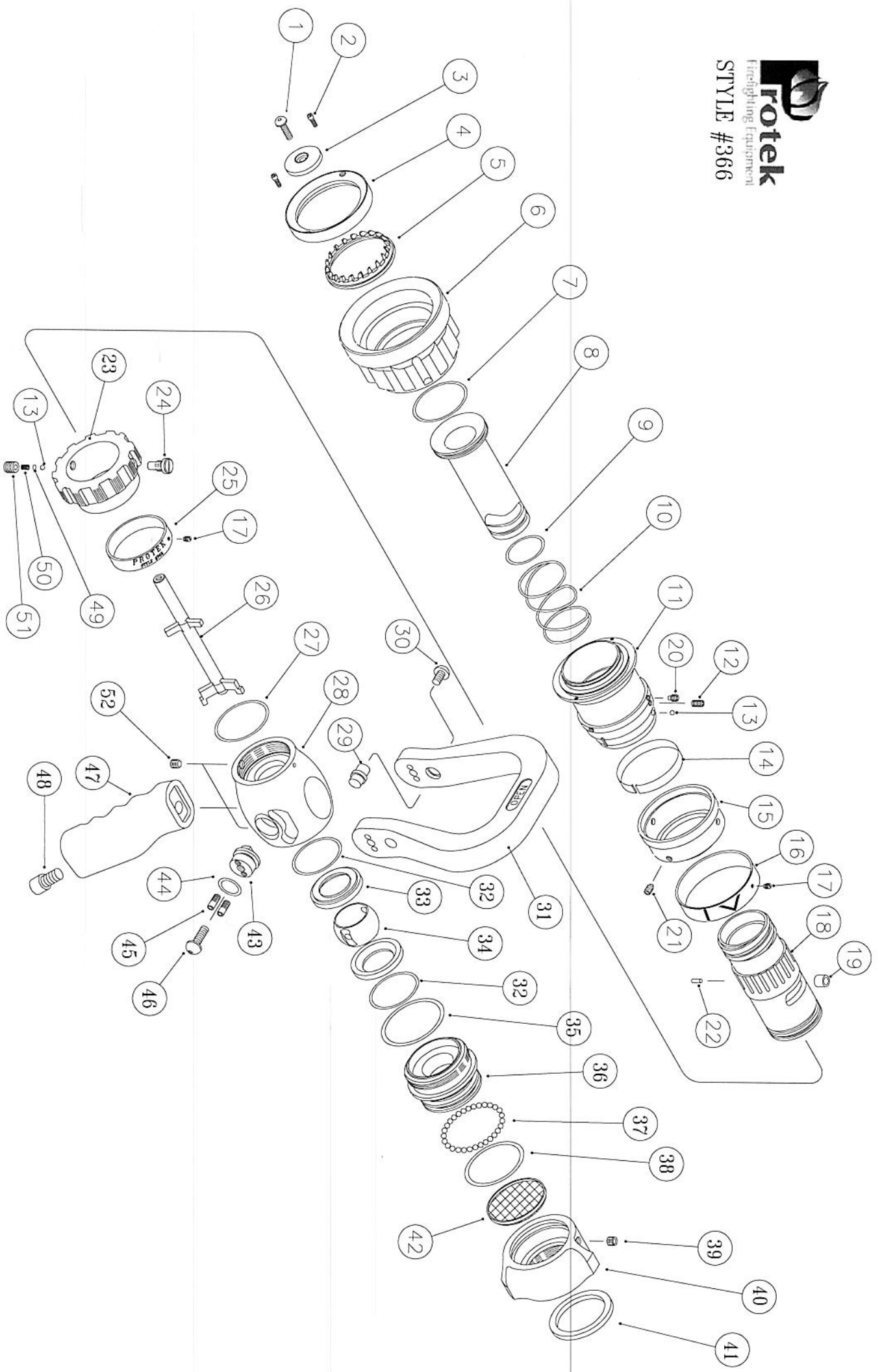


14-9-07

rotek
Fire-fighting Equipment
STYLE #366



24-9-07

1.



SERVICE PART LIST FOR #366 NOZZLE

ITEM NO.	DESCRIPTION	PARTS NO.	QUANTITY
1	SCREW (#10-24X1/2)	S0025	1
* 2	SCREW (#4-40X3/8)	S0065	2
3	BAFFLE	A0010	1
4	RETAINER	A0020	1
5	SPINNING TEETH	D0010	1
6	BUMPER	D0026	1
* 7	O-RING (S-40)	O0210	1
8	DISCHARGE TUBE	A0040	1
* 9	O-RING (27.5 X 2)	O0120	1
10	SPRING	F0089	1
11	PATTERN SLEEVE	A0030	1
12	SCRW (5/16-24)	S0060	2
13	BALL BEARING	F0071	3
14	ROUND SPRING	F0021	1
15	WEAR RING	A0031	1
16	PATTERN LABEL	A0036	1
17	SCREW	S0016	2
18	NOZZLE BODY	A0050	1
19	ROLLER	F0750	1
20	SCREW (#10-32)	S0064	3
21	SCREW (#10-32)	S0090	1
22	PIN	F0290	1
23	INDEX RING	A0059	1
24	SCREW (5/16"-24UNF)	S0250	1
25	FLOW LABEL	A0034	1
26	STEM	F0080	1
* 27	O-RING	O0205	1
28	VALVE BODY	A0071	1
29	PIN	F0105	2
30	SCREW(1/4-28)	S0110	2
31	HANDLE	A0022	1
* 32	O-RING	O0200	2
* 33	SEAT	F0311	2
34	BALL	F0110	1
* 35	O-RING (G-45)	O0325	2
36	ADAPTER	A0082	1
* 37	BALL BEARING (3/16)	F0076	31
38	O-RING (G-42)	O0320	1
39	SCREW (1/4-28)	S0112	1
40	SWIVEL	A0294	1

24-9-07

2.

* 41	GASKET	D0070	1
42	SCREEN	F0138	1
43	TRUNNION (LEFT)	F0100	1
	TRUNNION(RIGHT)	F0102	1
* 44	O-RING (P-14)	O0080	2
* 45	SCREW (#10-32)	S0131	4
46	SCREW (1/4-28)	S0012	2
47	PISTOL GRIP	A0112	1
48	SCREW	S0044	1
49	INSERT	F0217	1
50	DETENT SPRING	F0090	2
51	SCREW (5/16 - 24 X 3/8)	S0220	1
* 52	SCREW	S0114	1

“*” indicates that the parts included in Service Kit No. 1001.